



STAR TEK

FOR ELEVATORS







من نحن

استيراد قطع الغيار الأصلية للماركات العالمية: بالتعامل المباشر مع المصانع العالمية المصنعة لمكونات المصاعد بأسعار تنافسية. التركيز على تقديم أفضل الحلول بما يتواءم مع متطلبات العميل للحصول على أعلى سقف في ارضائه و ثقته بالشركة.

توفر ستار تك لعملائها :

١ - أعلى قدر من جودة المنتجات المستوردة ومحلية الصنع.

٢ - أفضل خدمة ما بعد البيع.

٣ - أفضل الأسعار التنافسية في السوق التجارى.

فقد استطاعت الشركة أن تثبت جدارتها في سوق التوريدات في مجال قطع غيار واكسسوارات المصاعد بأنواعها.

ستار تك حاصلة على شهادة ايزو

٢٠١٥ : ٩٠٠١

ستار تك تؤمن دائما من منطلق مسئوليتها تجاه الأمان والسلامة (لمستخدمي المصاعد - مهمات المصاعد) أن تكون الأولى والتميزة في جميع مكونات ومهمات مصاعدها بجميع أنواعها، لذا تحرص الشركة أن تزود عملائها بالأنظمة والتقنيات الحديثة والأمنة طبقاً للمعايير والمقاييس الدولية ومتطلبات السوق العالمية.

تطلعت الشركة إلى أن تكون من الشركات صاحبة الريادة بين شركات المصاعد الكبرى في مصر، وبالرغم إن ستار تك تعتبر حديثة المنشأ، إلا انها بالفعل بخبراتها قد حققت في تلك الفترة القصيرة أكثر من ١٧ عاماً حجم تعاملات كبيرة مع أكبر العملاء في توريد مهمات المصاعد للأسواق التجارية والعقارية والمنشآت.

توريد قطع الغيار والاكسسوارات الخاصه بالمصاعد للعديد من الشركات الإنشائية العامة منها والخاصة.



An ISO 9001:2015 Certified Company



ELEVATOR PANEL OPERATION

Serial Number

X-01+

Short Description

Stainless steel 304, density 2 mm - Black acrylic, density 2 mm
Light: ● / ● / ● / ○



ELEVATOR PANEL OPERATION

Serial Number

X-02+

Short Description

Stainless steel 304, density 2 mm - Black acrylic, density 2 mm
Light: ● / ● / ● / ○



ELEVATOR PANEL OPERATION

Serial Number

X-03+

Short Description

Stainless steel 304, density 2 mm - Black acrylic, density 2 mm
Light: ● / ● / ● / ○



ELEVATOR PANEL OPERATION

Serial Number

X-04+

Short Description

Stainless steel 304, density 2 mm - Black acrylic, density 2 mm
Light: ● / ● / ● / ● / ○



ELEVATOR PANEL OPERATION

Serial Number

X-05+

Short Description

Stainless steel 304, density 2 mm - Black acrylic, density 2 mm
Light: ● / ● / ● / ● / ○



ELEVATOR PANEL OPERATION

Serial Number

X-06+

Short Description

Stainless steel 304, density 2 mm - Black acrylic, density 2 mm
Light: ● / ● / ● / ● / ○


ELEVATOR PANEL OPERATION
Serial Number

FCOP-11

Short Description

 Stainless steel 304, density 2 mm
 - Clear acrylic, 2mm density
 Light: ● / ● / ● / ○

ELEVATOR PANEL OPERATION
Serial Number

FCOP-10

Short Description

 Stainless steel 304, density 2 mm
 - Black acrylic, density 2 mm
 Light: ● / ● / ● / ○

ELEVATOR PANEL OPERATION
Serial Number

FCOP-09

Short Description

 Stainless steel 304, density 2 mm
 - Clear acrylic, 2mm density -
 Light: ● / ● / ● / ○

ELEVATOR PANEL OPERATION
Serial Number

FCOP-07

Short Description

 Stainless steel 304, density 2 mm
 - Black acrylic, density 2 mm -
 Light: ● / ● / ● / ○

ELEVATOR PANEL OPERATION
Serial Number

FCOP-08

Short Description

 Stainless steel 304, density 2 mm
 - Black acrylic, density 2 mm -
 Light: ● / ● / ● / ○

ELEVATOR PANEL OPERATION
Serial Number

FCOP-06

Short Description

 Stainless steel 304, density 2 mm
 - Black acrylic, density 2 mm
 Light: ● / ● / ● / ○



ELEVATOR PANEL OPERATION

Serial Number

FCOP-04

Short Description

Stainless steel 304, density 2 mm
- Black acrylic, density 2 mm -
Light: ● / ● / ● / ○



ELEVATOR PANEL OPERATION

Serial Number

FCOP-05

Short Description

Stainless steel 304, density 2 mm
- Black acrylic, density 2 mm -
Light: ● / ● / ● / ○



ELEVATOR PANEL OPERATION

Serial Number

FCOP-03

Short Description

Stainless steel 304, density 2 mm
- Black acrylic, density 2 mm -
Light: ● / ● / ● / ○



ELEVATOR PANEL OPERATION

Serial Number

FCOP-13

Short Description

Stainless steel 304, density 2 mm
Light: ● / ● / ● / ○



ELEVATOR PANEL OPERATION

Serial Number

FCOP-12

Short Description

Stainless steel 304, density 2 mm
Light: ● / ● / ● / ○



ELEVATOR PANEL OPERATION

Serial Number

FCOP-01

Short Description

Stainless steel 304, density 2 mm
Light: ● / ● / ● / ○



ELEVATOR PANEL OPERATION

Serial Number

H017 GOLD

Short Description

Stainless steel 304



ELEVATOR PANEL OPERATION

Serial Number

H017 GOLD

Short Description

Stainless steel 304



ELEVATOR PANEL OPERATION

Serial Number

H017 LCD

Short Description

Stainless steel 304



ELEVATOR PANEL OPERATION

Serial Number

K-01

Short Description

Stainless steel 304



ELEVATOR PANEL OPERATION

Serial Number

H017 MIROR

Short Description

Stainless steel 304



ELEVATOR PANEL OPERATION

Serial Number

H017 MIROR

Short Description

Stainless steel 304



ELEVATOR PANEL OPERATION

Serial Number

K-02

Short Description

Stainless steel 304



ELEVATOR PANEL OPERATION

Serial Number

K-03

Short Description

Stainless steel 304



ELEVATOR PANEL OPERATION

Serial Number

NC

Short Description

Stainless steel 304



ELEVATOR PANEL OPERATION

Serial Number

NC

Short Description

Stainless steel 304



ELEVATOR PANEL OPERATION

Serial Number

H020

Short Description

Stainless steel 304



ELEVATOR PANEL OPERATION

Serial Number

H020

Short Description

Stainless steel 304



ELEVATOR PANEL OPERATION

Serial Number

DB-11

Short Description

Stainless steel 304
Light : ● / ● / ● / ○



ELEVATOR PANEL OPERATION

Serial Number

DB-10

Short Description

Stainless steel 304
Light : ● / ● / ● / ○



ELEVATOR PANEL OPERATION

Serial Number

DB-12

Short Description

Stainless steel 304
Light : ● / ● / ● / ○



ELEVATOR PANEL OPERATION

Serial Number

DB-13

Short Description

Stainless steel 304
Light : ● / ● / ● / ○



ELEVATOR PANEL OPERATION

Serial Number

DS-200

Short Description

 Stainless steel 304
 Light: ● / ● / ● / ●


ELEVATOR PANEL OPERATION

Serial Number

S-200

Short Description

 Stainless steel 304
 Light: ● / ● / ● / ●


ELEVATOR PANEL OPERATION

Serial Number

S-100

Short Description

 Stainless steel 304
 Light: ● / ● / ● / ●


ELEVATOR PANEL OPERATION

Serial Number

S-100

Short Description

 Stainless steel 304
 Light: ● / ● / ● / ●


ELEVATOR PANEL OPERATION

Serial Number

DB-09

Short Description

 Stainless steel 304
 Light: ● / ● / ● / ●


ELEVATOR PANEL OPERATION

Serial Number

DB-08

Short Description

 Stainless steel 304
 Light: ● / ● / ● / ●


ELEVATOR PANEL OPERATION

Serial Number

DB-07

Short Description

 Stainless steel 304
 Light: ● / ● / ● / ●


ELEVATOR PANEL OPERATION

Serial Number

DB-05

Short Description

 Stainless steel 304
 Light: ● / ● / ● / ●



ELEVATOR PANEL OPERATION

Serial Number

LB-303

Short Description

Stainless steel 304, density 2 mm - Black acrylic, density 2 mm
Light: ●/●/●/○



ELEVATOR PANEL OPERATION

Serial Number

NC

Short Description

Stainless steel 304, density 2 mm - Black acrylic, density 2 mm
Light: ●/●/●/○



ELEVATOR PANEL OPERATION

Serial Number

H020

Short Description

Stainless steel 304, density 2 mm - Black acrylic, density 2 mm
Light: ●/●/●/○



ELEVATOR PANEL OPERATION

Serial Number

Short Description

Stainless steel 304, density 2 mm - Black acrylic, density 2 mm
Light: ●/●/●/○



ELEVATOR PANEL OPERATION

Serial Number

LB-306

Short Description

Stainless steel 304, density 2 mm - Black acrylic, density 2 mm
Light: ●/●/●/○



ELEVATOR PANEL OPERATION

Serial Number

LB-300

Short Description

Stainless steel 304, density 2 mm - Black acrylic, density 2 mm
Light: ●/●/●/○



ELEVATOR PANEL OPERATION

Serial Number

LB-301

Short Description

Stainless steel 304, density 2 mm - Black acrylic, density 2 mm
Light: ●/●/●/○



ELEVATOR PANEL OPERATION

Serial Number

LB-308

Short Description

Stainless steel 304, density 2 mm - Black acrylic, density 2 mm
Light: ●/●/●/○


ELEVATOR PANEL OPERATION

Serial Number	DBK-03
----------------------	--------

Short Description

Stainless steel 304, density 2 mm
 Black acrylic, density 2 mm
 Light: Light: ● / ● / ● / ○


ELEVATOR PANEL OPERATION

Serial Number	DBK-02
----------------------	--------

Short Description

Stainless steel 304, density 2 mm
 Black acrylic, density 2 mm
 Light: Light: ● / ● / ● / ○



ELEVATOR PANEL OPERATION

Serial Number DBK-01

Short Description

Stainless steel 304, density 2 mm
 Black acrylic, density 2 mm
 Light: Light: ● / ● / ● / ○



ELEVATOR PANEL OPERATION

Serial Number DBK-04

Short Description

Stainless steel 304, density 2 mm
 Black acrylic, density 2 mm
 Light: Light: ● / ● / ● / ○





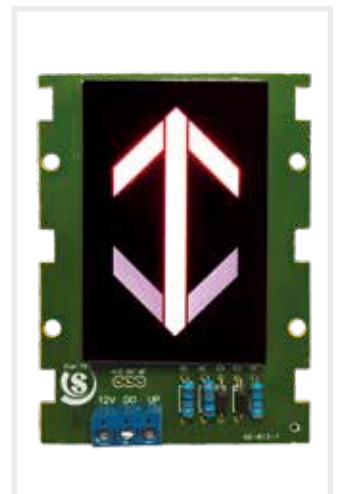
CONTROL ACCESS - FACE ID

Serial Number FD-01



CONTROL ACCESS - FINGERPRINT

Serial Number FD-02





THE ELEVATOR CONTROLLER

Serial Number Access-2008



THE ELEVATOR CONTROLLER

Serial Number WR



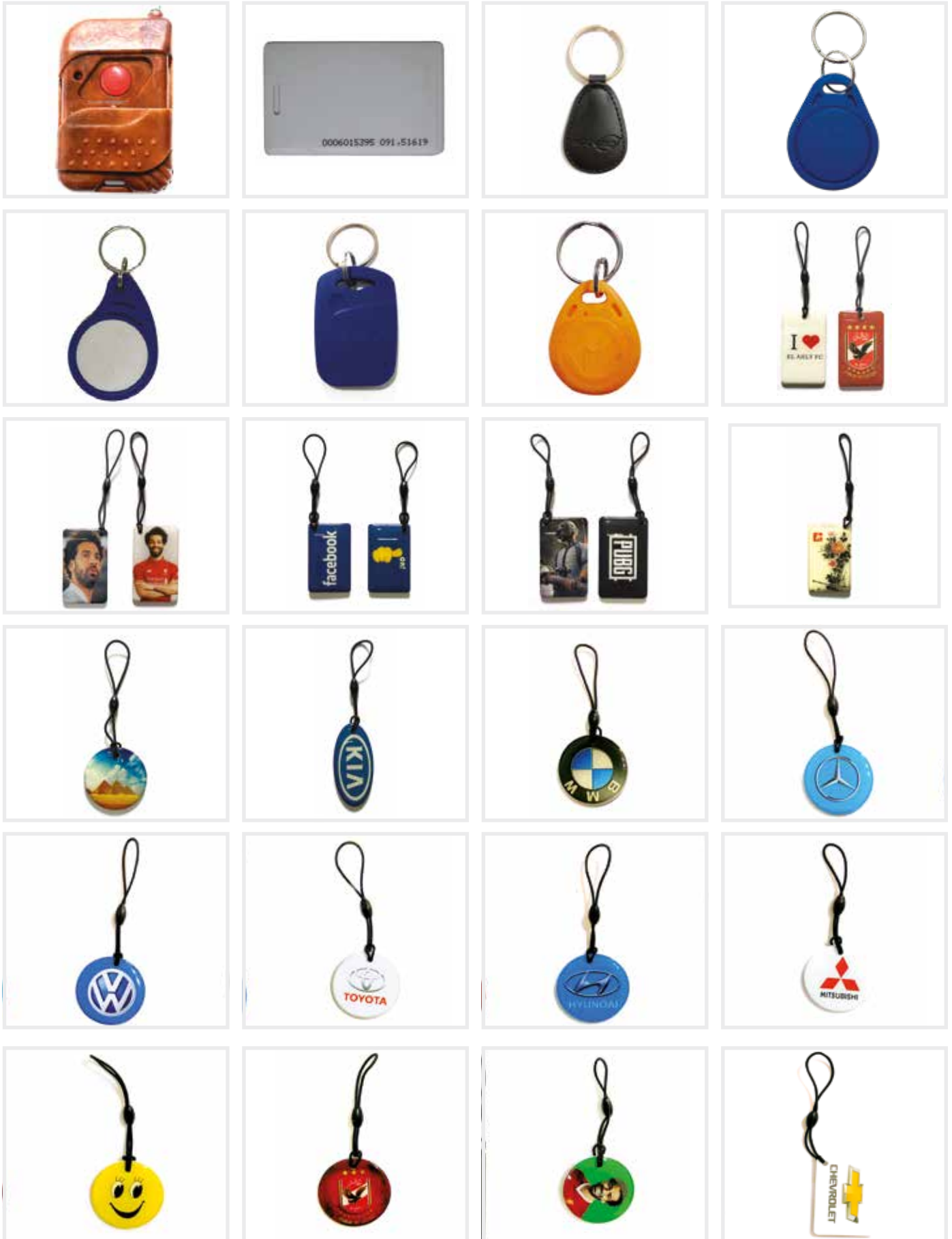
THE ELEVATOR CONTROLLER

Serial Number M-ST98



THE ELEVATOR CONTROLLER

Serial Number MK-098E





INSPECTION BOX

Serial Number NS-04



INSPECTION BOX

Serial Number NS-05



EMERGENCY STOP SWITCH

Serial Number NS-02



INSPECTION BOX

Serial Number NS-03



CONTACTEUR



DIODE BRIDGE



DIODE BRIDGE



ELECTRICAL TERMINAL



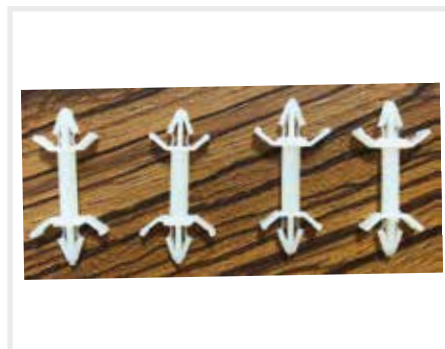
ELECTRICAL TERMINA



ELECTRICAL TERMINA



RELAY



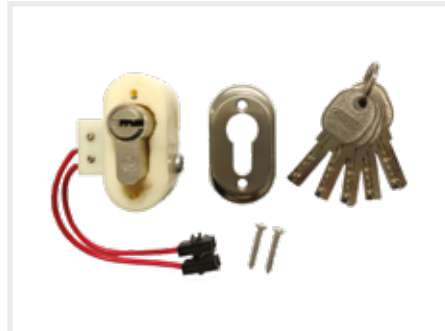
PLASTIC ANCHOR



POWER ADAPTER



PLASTIC FRAME



CYLINDER LOCK



CYLINDER LOCK



MAGNETIC SENSOR

Serial Number M01

Short Description
NO / NC / BI



MAGNETIC

Serial Number M02



MAGNETIC

Serial Number M03



MAGNETIC

Serial Number M04

PHOTOCELL

Serial Number INFRA-01

Short Description
Multi Beam Door Sensor



PHOTOCELL

Serial Number INFRA-02

Short Description
Door Sensor

PHOTOCELL

Serial Number INFRA-03

Short Description
Door Sensor





ELEVATOR FAN

Serial Number F01

Short Description

Cross flow fan - AC220v



ELEVATOR FAN

Serial Number F02

Short Description

AC220v - 38W - 50/60Hz - 17cm



ELEVATOR FAN

Serial Number F03

Short Description

AC220v - 65W - 50Hz - 20cm

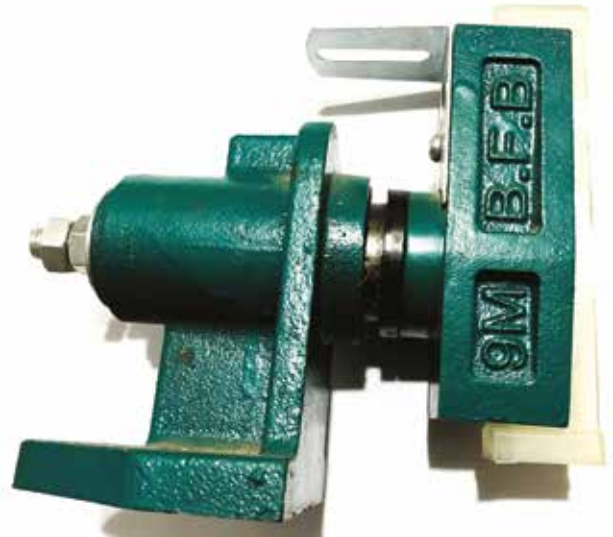
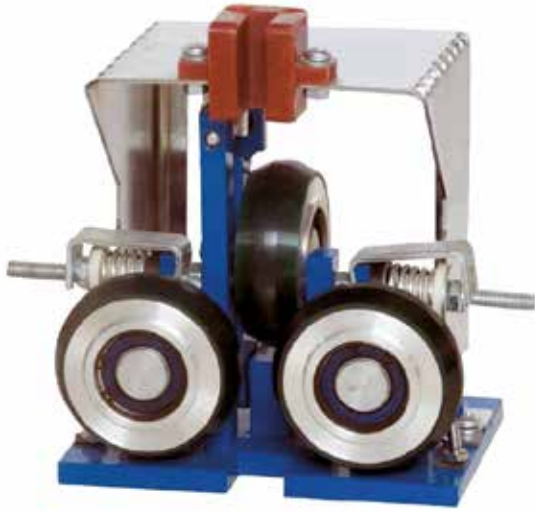


ELEVATOR FAN

Serial Number F04

Short Description

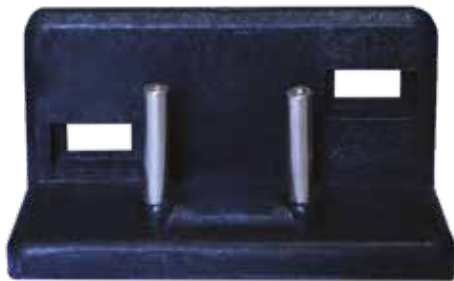
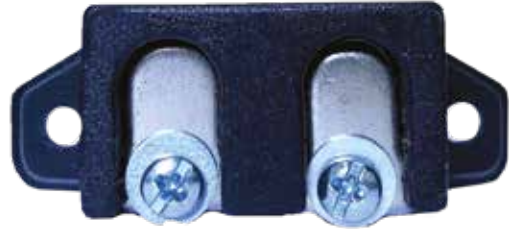
AC220v - 50/60Hz - 22W - 12cm



















CONTACT INFO

Office: 28 Abdel Rahman Nasr St. - El Zaytoun - Cairo, Egypt.

Factory: Plot No. 70, Industrial Zone, 100 Acres, Small Industries, Badr City, Cairo, Egypt.

Mobile: +2 01111124277

whatsapp: +2 01066647126

Landline: +2 02 22820540

Email: info@startek-elevators.com

